

ClearV™

Treat the Veins You Can and Can't See!

ClearV™ is the preferred choice for vascular treatments.

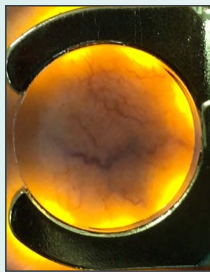
It effectively and safely treats visible vessels, broken capillaries, spider veins, vascular lesions, and skin discoloration. Undesirable visible micro vessels will be gently eliminated. Resistant unwanted subsurface vessels will be heated by the laser energy and will fade over time and become less noticeable.



Technology

Subsurface Vein Illumination (SVI™)

SVI technology is specially designed to give the provider enhanced visibility to see subsurface and feeder veins to treat more thoroughly and effectively. Pushbutton controls on the handpiece offer the ability to change the color, level of brightness, and aiming beam intensity.



Adjustable Integrated Cooling

Sapphire tip provides optimal cooling pre, during, and post treatment as well as bulk cooling for patient comfort. The adjustable cooling range of 5-25 °C is ideal for comfortably treating a variety of vascular conditions safely, efficaciously, and efficiently.



VascuZoom

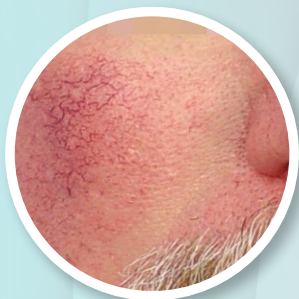
VascuZoom enables quick and easy spot size changes directly on the handpiece. This enables the user to switch effortlessly between 2-6 mm spot sizes.

Benefits

- Subsurface Vein Illumination (SVI™)
- Integrated cooling
- All Fitzpatrick skin types
- No disposables
- Combine with ClearSilk™, HALO™, Resurfacing™ and BBL™ treatments to offer best in class treatments
- No patient downtime - treat all year long

Indications

- Facial telangiectasias
- Leg veins
- Periorbital veins
- Reticular veins
- Spider veins
- Port wine stains
- Rosacea
- Warts
- Skin tags



ClearV™ | 3 months post 3 tx | Courtesy of Arkansas Laser Solutions



ClearV™ | 1 months post 1 tx | Courtesy of Brian V. Heil, MD